

List of Reports

Report  
Summaries

News & More Info

Email List

Contact

Donate

## Geology and Geophysics

### Report Summaries

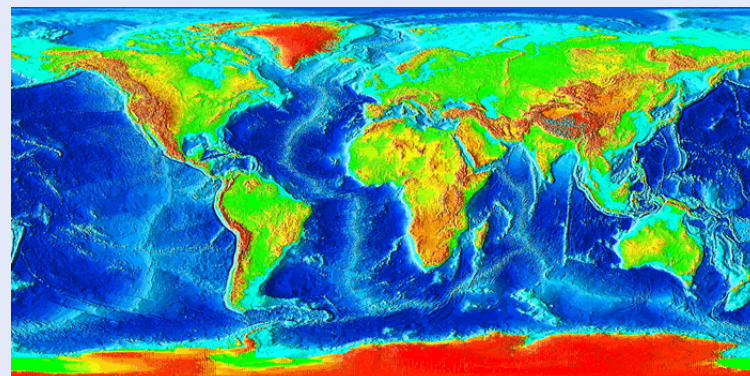
**Garden of Eden**  
(geophysics, sonar technology)

**Pangaea to Plate Tectonics**  
(geophysics)

**Sierra Mountains**  
(dating with isotopes)

At the beginning and end of each summary is a link for that summary's full report.

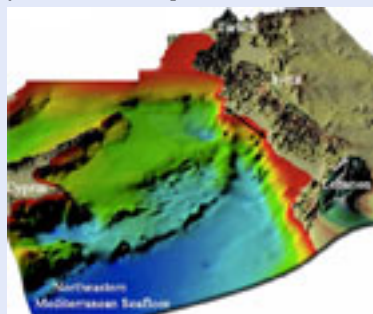
Summaries of the more impressive reports are listed first.



---

### Garden of Eden Summary

[Updated 3/7/07]



A description of the location and physical characteristics of the Garden of Eden is provided in *The Urantia Book*. The location is said to have been on a long narrow peninsula that extended off the eastern coast of the Mediterranean Sea. According to *The Urantia Book*, Adam and Eve first lived at this location almost 38,000 years ago, and it further states that this peninsula sank into the Mediterranean Sea approximately 34,000 years ago. The topography of the seafloor in an area between Cyprus and the Syrian coast fits the description

and looks to be the only area that could. Today, this area off the eastern coast of Mediterranean Sea drops down sharply, quickly reaching a depth of nearly one mile.

When *The Urantia Book* was published in 1955, sonar readings needed to create a detailed map of the eastern Mediterranean basin did not exist. Such maps were not created until decades after *The Urantia Book's* publication. Support for *The Urantia Book's* story about Adam and Eve is also documented in the [Adam and Eve Report](#) and the [Gobekli Tepe Report](#).

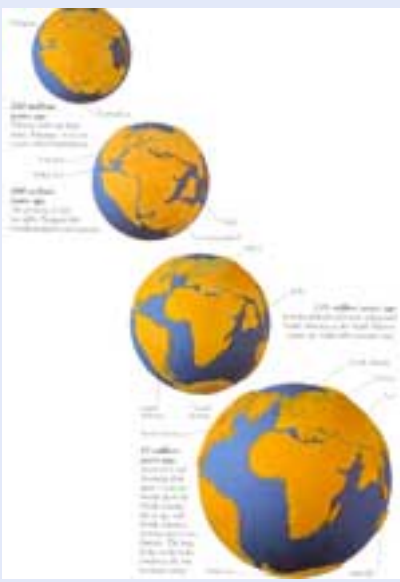
[Read Garden of Eden Report.](#)

[Watch video of Denison University presentation.](#)

---

### Pangaea to Plate Tectonics Summary

[Updated 4/9/07]



Not only does *The Urantia Book* say that the continents were once all connected as one land mass and that they broke up and then drifted apart, it also provides details about how this happened. Additionally, it addresses issues related to how various pressures affect the interrelationship of oceans, continents, the earth's crust, volcanoes, earthquakes, and mountain formation. Though the theory of continental drift had been around for a long time and some evidence in support of this theory had been developed prior to *The Urantia Book's* publication in 1955, the continental drift theory was very unpopular at the time of publication because scientists had not come up with an adequate explanation for how continents were able to move. In fact, seafloor spreading and plate tectonic theories, which brought continental drift theory into acceptance, had not yet developed.

Wikipedia puts it this way, "The acceptance of the theories of continental drift and sea floor spreading (the two key elements of plate tectonics) may be compared to the Copernican revolution in astronomy [when it was accepted that the planets move around the sun, not that everything moves around earth]. Within a matter of only several years geophysics and geology in particular were revolutionized. . . . What had been rejected for decades by any respectable scientific journal was eagerly accepted within a few short years in the 1960s and 1970s."

Going beyond a general description of the formation of the continents and mountain ranges, *The Urantia Book* also gives specific details about the sinking of a peninsula off the eastern coast of the Mediterranean some 33,000 years ago. Sonar technology had not developed sufficiently at the time of *The Urantia Book's* publication to provide a clear picture of the topography of the eastern Mediterranean basin. Today's more advanced sonar mapping reveals a topography between Cyprus and the coast of Syria that not only aligns with *The Urantia Book's* description, but also is located at the convergence of three highly active plates that produce an unusual crosscurrent of pressures. (Go to the [Garden of Eden](#) for a complete explanation about this now sunken peninsula.)

[Read Pangaea to Plate Tectonics Report...](#)

---

### Sierra Mountains Summary

[Updated 6/29/08]



A longstanding controversy has existed over when the Sierra Mountains were formed. Two schools of thought developed, referred to as the Old Sierras and the New Sierras theories. The Old Sierras theory holds that the Sierra Mountains formed about 50 million years ago; the New Sierras theory asserts that they are only about 5 million years old. Though the controversy is not entirely laid to rest by research published in 2006, this new approach to dating the mountains employs a technology that is much more specific than

previous methodologies and has been widely accepted as reliable when used in other applications. The results are harmonious with the Old Sierras theory and what was asserted by *The Urantia Book* in 1955.

[Read Sierra Mountains Report...](#)

---

[Back to Top](#)